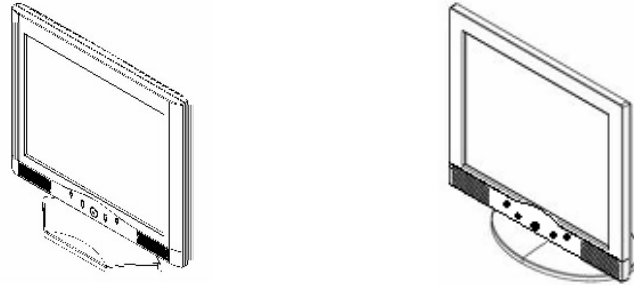




15"/17" TFT-LCD MONITOR



V150/ V171

USER'S MANUAL

www.viewera.com

CONTENTS

1. Introduction

Product Description Page 1

Package Contents

Product Features

Screen Cleaning Techniques

Additional

2. Control Functions Page 5

3. Input Diagrams Page 10

4. Installation..... Page 11

5. Product Specifications..... Page 12

6. Dead Pixel Policy..... Page 16

7. Warranty and Customer Service Page 16

8. Windows Setup Page 17

9. Trouble Shooting Page 19

1. Introduction

Product Description

Congratulations on your purchasing ViewEra 15"/17" LCD monitor. It incorporates high quality display into a small light weighted module. It has power-saving capabilities and emits no radiation. You will certainly benefit from this monitor in lots of ways; to name some of them: comfort, safety and environmental protection.

This LCD monitor incorporates color active matrix thin-film-transistor (TFT) liquid crystal display to provide superior display performance. Its maximum resolution is 1024x768(SVGA) for V150, 1280 x 1024 (SXGA) for V171. The V150/V171 also includes built-in speakers, one touch image adjusting and OSD (On Screen Display) controls.

Package Contents

Included with your LCD monitor as following items :

- 15"/17" TFT LCD monitor
- 15 pin D-sub signal cable
- Audio Cable
- Power cord
- Power adapter
- User's manual

Product Features

- High brightness, high contrast ratio and quick response time.
- Built-in speakers.
- Power management system conforms to VESA DPMS standard.
- Support Plug & Play, no need for driver installation.
- Advanced OSD controls for picture quality adjustment.
- Detachable stand for wall-mounting with VESA 75 (mm) bracket.

Screen cleaning techniques

- Gently clean the screen with a clean camel hair lens brush, or a soft, clean, lint-free cloth, to remove dust and other particles that can scratch the screen.
- Do not apply pressure to the screen surface while cleaning.
- Do not pour or spray any liquid directly onto the screen or casing. Chemical cleaners have been reported to damage the screen or case of the LCD monitor.

Additional

- Read all of these instructions and save them for later use.
- Follow all warnings and instructions on the product.
- **Product**
 - ◆ Do not cover block the vent holes in the case.
 - ◆ Do not insert sharp objects or spill liquid into the LCD monitor through cabinet slots. They may cause accident fire, electric shock or failure.
 - ◆ Disconnect the power plug from the AC outlet if you will not use it for an extended period of time.
 - ◆ Do not attempt to service this product yourself, as opening or removing covers may expose you to dangerous voltage points or other risks.
 - ◆ Do not touch the screen directly with your fingers. You may damage the screen, and oil from your skin is difficult to remove.
 - ◆ Do not apply pressure to screen. The LCD is very delicate.
- **Power**
 - ◆ Use the type of power indicated on label.
- **Plugs**
 - ◆ Do not remove any of the prongs of the monitor's three-pronged power plug.
 - ◆ Disconnect the power plug from the AC outlet under following conditions :
 - ♥ When the power cord or plug is damaged or frayed.
 - ♥ The product does not operate normally when the operating instructions are followed. Adjust only those controls that are covered by the operating instructions. Improper adjustment of other controls may result in damage and will often require extensive work by a qualified technician.
 - ♥ If the product exhibits a distinct change in performance, service may be required.

● **Power and extension cords**

- ◆ Do not allow anything to rest on the power cord.
- ◆ Do not locate this product where persons will walk on the cord.
- ◆ Use the proper power cord with correct attachment plug type. If the power source is 120V AC, use a power cord that has UL and C-UL approvals. If the power source is a 240V AC supply, use the tandem (T blade) type attachment plug with ground conductor power cord that meets the respective European country's safety regulations, such as VDE for Germany.
- ◆ Do not over load wall outlets or power cords. Ensure that the total of all units plugged into the wall outlet does not exceed 10 amperes.
- ◆ Ensure that the total ampere ratings on all units plugged into the extension cord is not above the cord's rating.
- ◆ If the power supply cord, which came with your monitor, is to be connected to the PC instead of the wall outlet, Use an UL/TUV approved computers with receptacle rated 100~240V AC, 50/60Hz, 1.0A(minimum) only.

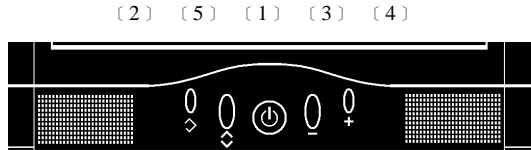
● **Environment**

- ◆ Place the monitor on a flat and leveled surface.
- ◆ Place the monitor in a well-Ventilated place.
- ◆ Keep the monitor away from :
 - Overly hot, cold or humid places, places directly under sunlight, dusty surroundings, equipment that generate strong magnetic fields.
- ◆ Please adjust the frequency to 75 Hz after setting up the LCD monitor.
- ◆ Then push the OSD menu button and use the Auto Adjust function to find the best mode of your computer.

2. Control Functions

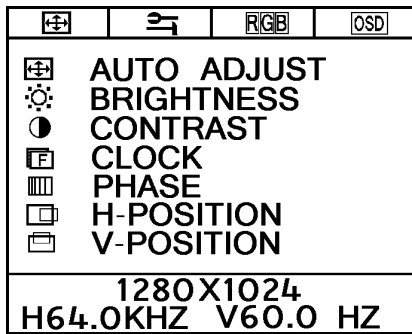
a. 【PC,Audio,DVI】

Control Button Front View (Model : V150 、 V171 series)



- 1. Power switch** Power switch & LED.
- 2. Auto adjust** Press this button to obtain the best display quality.
- 3. Adjust (decrease —)** This button is used to decrease the value of selected function.
- 4. Adjust (increase +)** This button is used to increase the value of selected function.
- 5. OSD menu / Enter** Press this button and the OSD menu pops up on the screen. It's also used to enter the functions in the OSD.

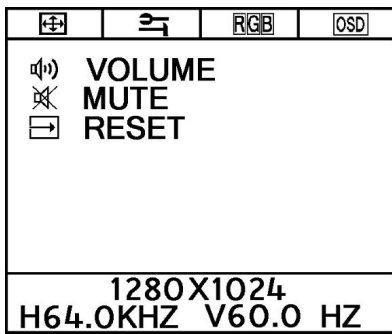
OSD Controls



Monitor Function Selection Menu :

- AUTO ADJUST** Press this button to obtain the best display quality.

- BRIGHTNESS** Adjust the brightness by using + and - buttons.
- CONTRAST** Adjust the contrast by using + and - buttons.
- CLOCK** Adjust the clock by using + and - buttons.
- PHASE** Adjust the phase by using + and - buttons.
- H-POSITION** Press + to move the image to right.
Press - to move the image to left.
- V-POSITION** Press + to move the image upward.
Press - to move the image downward.



Tools Menu :



VOLUME

Adjust the volume by using + and - buttons.



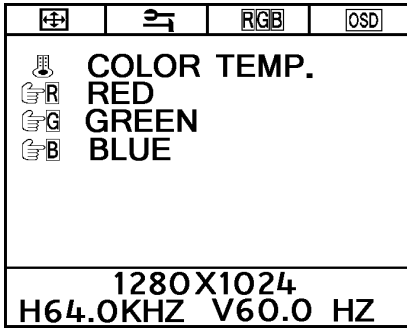
MUTE

Speakers are inactive.



RESET

Recall factory settings



Color Temperature and RGB Adjusting Menu :



COLOR TEMP. Adjust the color temperature of the display.



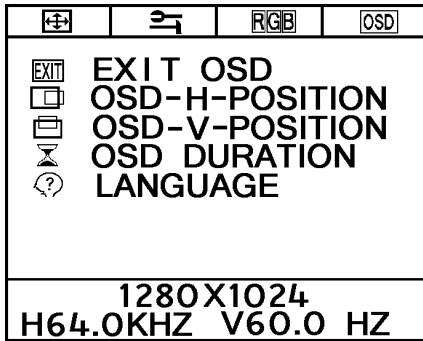
RED Adjust red pixel luminance.




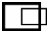



GREEN Adjust green pixel luminance.



BLUE Adjust blue pixel luminance.



OSD Function Selection Menu :

- | | | |
|---------------------------------------------------------------------------------|-----------------------|---------------------------------------------------------------------------------|
|  | EXIT OSD | Exit the OSD menu. |
|  | OSD-H-POSITION | Press + to move the OSD menu to right.
Press - to move the OSD menu to left. |
|  | OSD-V-POSITION | Press + to move the OSD menu upward.
Press - to move the OSD menu downward. |
|  | OSD DURATION | Set the OSD display time. |
|  | LANGUAGE | Set the OSD display language. |

3. Input Diagrams

Inputs

【PC】



【1】 DC IN

This is for connecting the adapter DC 12V/3A (4A) cable.

【2】 LINE IN

This can be connected to the audio-out jack of any sound card.

【3】VGA (Analog) IN This can be connected with the D-sub 15 pin signal connector.

4. Installation

Electrical Connection

Please follow the instruction below to properly connect the LCD monitor to external electrical source.

1. Connect the female-end of the power cable to the transformer. Connect the male-end of the power cable to the wall outlet or extension cable.
2. Connect the cable from the other end of the transformer to the LCD monitor DC IN located at the back of the LCD monitor.

Signal Connection

1. Power off both the LCD monitor and PC system before connecting them.
2. Take out the VGA cable from the box and then connect it to the signal connector at the back of the LCD monitor.
3. Connect the other end to the VGA connector on the back of the PC system.
4. Please make sure the connection to both the PC system unit and the LCD monitor are secure. Tighten the screws on each connector end.
5. Now turn on both the PC system and the LCD monitor.
6. After you finish setting up the LCD monitor, please set the refresh rate to 75Hz.
7. After setting up the LCD monitor, please perform Auto Adjust in OSD so that the LCD monitor will be automatically set to optimal display settings.

* Please note: When you disconnect any power cable or signal cable, please do not pull the cable by grabbing the cable body. Please grab the cable connector itself whenever you try to pull the cable during disconnect.

5. Product Specifications

a. 15" LCD monitor

Model	V150
Spec	
Display type	15" active matrix TFT LCD panel
Pixel pitch	0.297(H) x 0.297(V) mm
Max. resolution	1024(H) x 768(V) XGA
Contrast ratio	400 : 1
Brightness	250 cd/m ²
Response time	25 ms
Display color	16.777M
Viewing angle (H/V)	130° / 100°
Display mode	VGA, SVGA
Power consumption	ON<48W (maximum)
Signal connector	D-sub
Front control	Auto adjustment, ,OSD menu, power, “- “ and “+“
OSD menu	Brightness, Contrast, Auto Adjustment, Clock, Phase, Language and Reset
Power adapter	AC Input: 100-240V~1.8A, 50-60Hz; DC Output : 12V/ 3.0A
Weight	Net : 3.55Kgs , Gross : 5.25Kgs
Set Size	375(H) x 360(V) x 185(D) mm

V150 Display Modes

Mode	Resolution	H Freq (KHz)	V Freq (Hz)
1	640 × 350	31.469	70.0
2	640 × 480	31.469	59.9
3	640 × 480	37.861	72.8
4	640 × 480	37.500	75.0
5	720 × 400	31.469	70.0
6	800 × 600	35.156	56.2
7	800 × 600	37.879	60.3
8	800 × 600	48.077	72.1
9	800 × 600	46.875	75.0
10	1024 × 768	48.363	60.0
11	1024 × 768	56.476	70.0
12	1024 × 768	60.023	75.0

b. 17" LCD monitor.

Model	V171
Spec	
LCD Display	17" Active matrix TFT LCD panel
Pixel Pitch	0.264(H) x 0.264(V) mm
Max. Resolution	1280(H) x 1024(V) SXGA
Contrast Ratio	400 : 1
Brightness	250 cd/m ²
Response Time	25 ms
Display Color	16.777M
Viewing Angle (H/V)	140° / 130°
Display Mode	VGA, SVGA, XGA, SXGA
Power consumption	ON<48W (maximum)
Signal Connector	D-sub
Front Control	Auto adjust, Power, OSD menu, “-” and “+”
OSD Menu	Brightness, Contrast, Auto Adjust, Clock, Phase, H-Position, V-Position, Language
Power Adapter	AC Input: 100-240V~1.8A, 50-60Hz; DC Output: 12V/ 4.0A (4.2A)
Weight	Net:7.5Kgs; Gross:9.8Kgs
Set Size	413(W) x 414(H) x 195(D) mm

V171 Display Modes

Mode	Resolution	H Freq (KHz)	V Freq (Hz)
1	640 × 350	31.469	70.0
2	640 × 480	31.469	59.9
3	640 × 480	37.861	72.8
4	640 × 480	37.500	75.0
5	720 × 400	31.469	70.0
6	800 × 600	35.156	56.2
7	800 × 600	37.879	60.3
8	800 × 600	48.077	72.1
9	800 × 600	46.875	75.0
10	1024 × 768	48.363	60.0
11	1024 × 768	56.476	70.0
12	1024 × 768	60.023	75.0
13	1280 × 1024	63.981	60.0
14	1280 × 1024	79.760	75.0

6. Dead Pixel Policy

Dead pixels on the TFT LCD panel are sometimes inevitable. ViewEra guarantees that the monitor will be replaced if the number of dead pixels on our monitor exceeds 5 pixels within the first year from the date of purchase.

7. Warranty and Customer Service

Warranty

ViewEra warrants the 15"/17" TFT-LCD monitors for one year LCD panel and backlight, three years parts and labor from the date of purchase. For detail information, please refer to our website.

([http:// www.viewera.com/warranty.htm](http://www.viewera.com/warranty.htm))

Customer Service

Contact your ViewEra retailer or ViewEra for after sale service. You may contact ViewEra Customer Support:

1. By Mail: 328 Paseo Tesoro, Walnut, CA 91789
2. By Telephone: (909)595-3748
3. By Fax: (909)595-3526
4. By E-mail: support@viewera.com

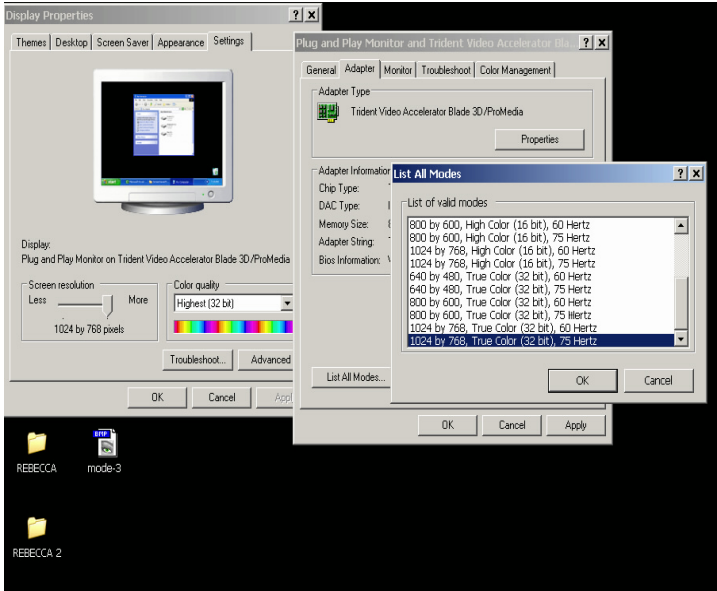
The business hours are 9:00 am – 6:00 pm PST, Mon – Fri.

8. Windows setup

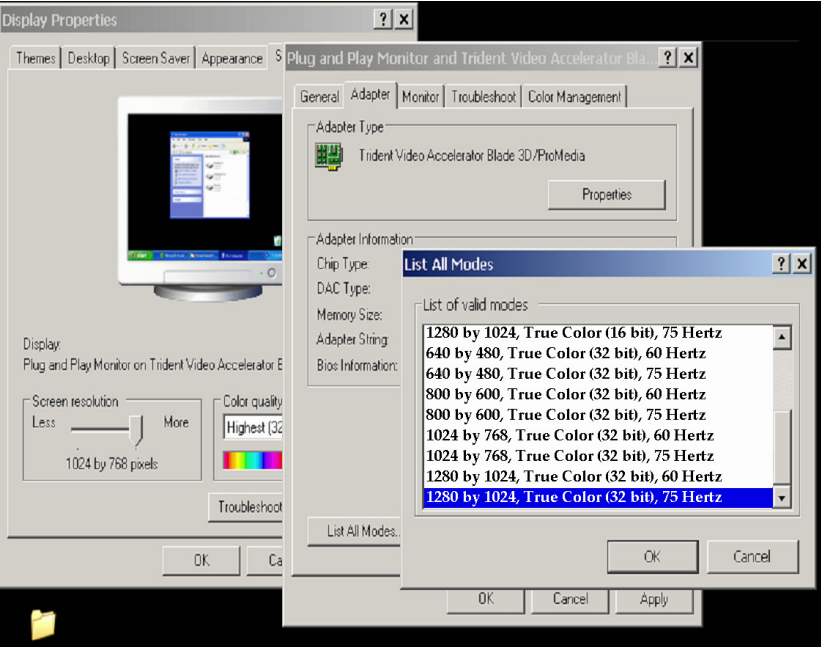
For the best display quality, please set the monitor type in Windows.

Control Panel > Display > Settings > Advanced > List All Modes

For V150, please set to “XGA 1024 × 768 @ 75Hz.”



For V171, please set to “SXGA 1280 × 1024@75Hz.”



9. Trouble Shooting

1) Power on but no picture

- Make sure the VGA cable is tightly connected from the video output connector on the video card to the video input connector on the monitor.
- Make sure you are using the standard power adapter coming with the monitor.
- Check your video card if the driver is correctly installed. If there is no video signal from the video card, “NO INPUT SIGNAL” will show on the screen.

2) Wrong or abnormal colors

- If any color (red, green, or blue) is missing, check video cable to make sure it is securely connected. Loose pins in the cable connector can cause a bad connection.

3) The text and icon look blurry

- LCD monitor has a native resolution which pixels are produced by cells in fixed positions. When a resolution different from the native resolution is chosen, the LCD monitor uses various interpolation methods to achieve the pseudo resolution. To achieve the optimum viewing quality, choose the native resolution of the panel is recommended.
- Use “Auto Tuning” function to adjust image quality on the OSD menu or you can hold button 2 for 3 seconds to do auto tuning.

4) Display position is incorrect

→ Use “Auto Tuning” function to adjust image position on the OSD menu or you can hold button 2 for 3 seconds to do auto tuning.

5) Speakers have no sound

→ Make sure the audio cable is tightly connected from the audio output jack on the PC to the audio input jack on the monitor.

6) Residue image

→ If an image remains on the screen for an extended period of time, it may be imprinted in the screen and leave a residue image. It is characteristic of liquid crystal and is not malfunction or deterioration of the liquid crystal. The residue image will disappear after a period of time. It is recommended to set up the screen saver for your LCD monitor.

7) Out of Rang

→ The first thing you need to check is the screen resolution. Usually “Out of Range” is caused by improper resolution setting. You can recover the proper screen resolution as the following steps for Windows: (Assumed that the optimal resolution and frequency setting is 1280x1024@ 60Hz.)

Boot the computer into **VGA Mode** (F8) [repeatedly] at startup.

Go to “**Control Panel**”, double click on “**Display**”, click on the **SETTINGS** TAB, and click on the **ADVANCED** button.

Then Click on the **Adapter** TAB, click “**List All Modes**” and change the screen resolution to 1280x1024. (You can select 16 bit or 32 bit color which depends on your video card capability.)

Select “**1280 by 1024, High Color (16 bit), Default Refresh**”

Click on the “**OK**” and “**APPLY**”.

After clicking the **APPLY** button, a message will be displayed “Your desktop has been reconfigured. Do you want to keep these settings?”

Click “**Yes**” and “**OK**”. Then click “OK” on the Display Properties window.

Restart your PC

After you restart, go back to “List All Modes” to adjust your screen refresh rate to 60 Hertz.

The “Out of Range” may happen if you switch monitor A to monitor B for your PC. Whenever you change the monitor for your PC, your PC may detect it as a new hardware and automatically install a proper driver for the monitor. So, you will have both monitor A and monitor B drivers on your PC. Sometimes the two monitor drivers may conflict each other and cause “Out of Range”. You can resolve “Out of Range” by uninstalling both monitor drivers and reboot your PC. The Windows will automatically detect the new hardware and install a proper driver for the monitor. Here is a quick way to uninstall the monitor drivers: Right click on “**My Computer**”, select “**Properties**” and click on “**Hardware**”. Click on “**Device Manager**”, select “**Monitor**” and click on “+” in front of “Monitor”. Then you can see one of the monitor drivers called “**Plug and Play Monitor**”. A quick way is to uninstall all the monitor drivers and then let Windows automatically detect the new hardware. (Right click on the monitor driver and select “Uninstall”).

Restart your PC